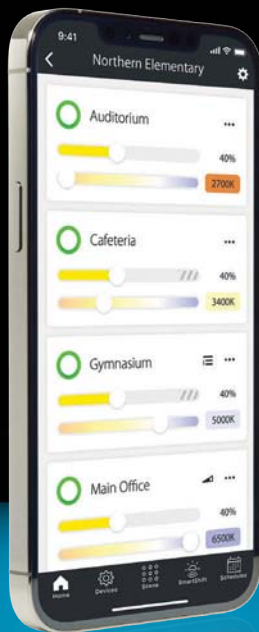


Lightcloud®



2024

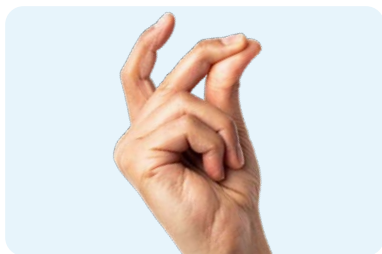
RAB®

Lighting Control Made Easy...

Lightcloud Blue is a powerful, flexible, simple lighting control system designed to manage lighting wirelessly, without the need of a Gateway or Hub. It's as easy as downloading the Lightcloud Blue app, connecting your enabled products, and quickly configuring them.

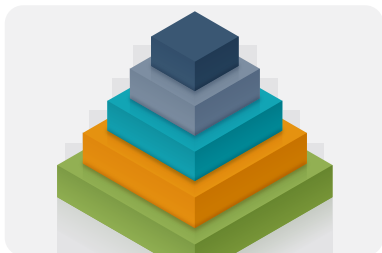
Rapid Provisioning

Rapid Provisioning is a patented technology that allows users to easily commission devices in large groups (up to 100) rather than one at a time, so you can get hundreds of devices connected in minutes instead of hours—that's up to 10x faster than any other competing control system on the market!



Scalable and Flexible

Lightcloud Blue makes it simple to start small and scale up, letting you add up to tens of thousands of devices to your system! Because it's so easy to grow, Lightcloud Blue is equally capable of managing residential, commercial, or industrial applications.



Bluetooth® Mesh Connectivity

Lightcloud Blue devices are controlled via an independent, self-automated Bluetooth mesh system. Each device in that system can communicate directly with any other device in it, eliminating the need for a Lightcloud Gateway or Hub.



Easy Set Up & Use

Building your Lightcloud Blue system is as simple as installing the lighting, turning it on, and opening the app on your mobile device. Once powered, products will enter the pairing mode automatically and the app instantly detects them.

On/Off and Dimming

Control individual lights or instantly adjust light levels in any area. Most light sources can dim to as low as 10%.



Areas

Set light levels for multiple fixtures in unison. Creating numerous areas allows you to set the lighting that is best suited to the needs of each environment. Combine dimming and occupancy sensing for even more control.



Scenes

Create individual scenes that are tailored to a specific activity or event so that you can adjust light levels at the drop of a hat.



Scheduling

Create schedules for lights to turn on or off, dim or brighten. Last-minute change? Schedules can be adjusted or disabled at any time from your smartphone with just a couple of quick clicks.



SmartShift*

Automatically tune the color and intensity of lighting throughout the day, mimicking the sun's changing light as it rises and sets.



Emergency Mode

Turn your home into a beacon. One click will start all Lightcloud Blue lighting flashing to alert others in the area that there's a problem.

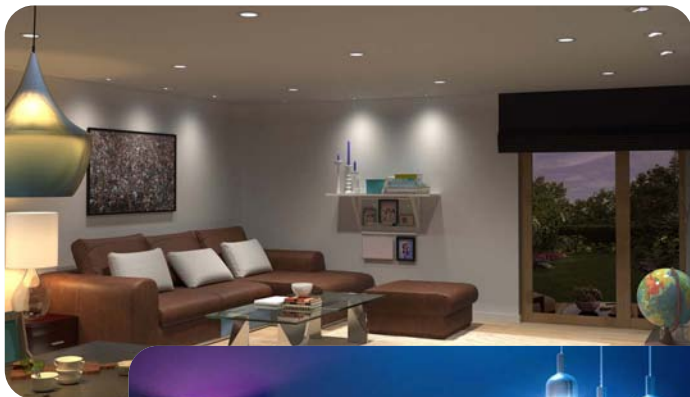


Flexible and scalable.

Lightcloud Blue's versatility is largely based on its scalability. Because you can start small or build your system to control up to 600 devices per site. It is flexible enough to be used in residential, commercial, or industrial applications. Whether it's a single-family home, an office building, a school, or a manufacturing facility, Lightcloud Blue is capable of managing the lighting system.

Residential Applications

Smart homes afford us the ability to maximize control of our surroundings with the minimal amount of effort and Lightcloud Blue is no exception. Set schedules to fit your lifestyle, adjust for ambience, and even color your world with lamps and downlights that can be set to 16+ million different colors!



Commercial Applications

Not all offices require a large-scale-capacity lighting control system. Lightcloud Blue is perfectly suited for spaces that need control and functionality on a smaller scale. Leverage daylight harvesting, maximize alertness with SmartShift presets, and set schedules based on the average work day. If the office space grows, Lightcloud Blue can grow with it!



Industrial Applications

Much like commercial spaces, industrial spaces don't always require a large-scale-capacity lighting control system, either. Lightcloud Blue can maximize safety with motion detection sensors, leverage daylight harvesting for additional energy savings, and set schedules based on the average work day shift.





SmartShift is the first lighting technology that can promote better sleep, health and happiness. With one click, SmartShift-enabled fixtures on a Lightcloud Blue system will set themselves to your time zone and begin adjusting your light level and color temperature to match the natural pattern of the sun—a soft glow in the morning, energizing light during the day, and a warm hue in the evening. Create your own scenes and schedule to temporarily override automated circadian controls for precision customization, all right from your phone. We've even included five of the most common presets for you!



SmartShift Preset Options



Wellness

Uses the same "sunrise" and "sunset" times every day based on your site's schedule.



Nature

Uses the local sunrise and sunset times in your time zone, adjusting itself as days get shorter/longer.



Office

Cooler temperatures from morning to noon for maximum alertness and reduced stimulation from noon to the end of the work day (5pm).



School

Cooler temperatures from morning to noon for maximum alertness and reduced stimulation from noon to the end of the school day (3pm).



Calm

Color temperatures change throughout the day but never go above 4500K, creating a warm, relaxing, calming atmosphere.



Other Features



Natural Spectrum

Natural Spectrum - Natural Spectrum technology mimics natural sunlight to deliver museum-quality, ultra-high, 95+ CRI that renders colors accurately so you can see them as they are.



Tunable White

Fully adjustable.
2200K-6500K



Tunable Color

16+ million colors to choose from,
all from your mobile app.

Security

Isolation

- Isolated from other networks
- Not affected by compromises to computer networks or dependent on utilizing existing IT infrastructure.
- Only Lightcloud Blue devices are supported by the Lightcloud network – isolating it from interference and anipulation.



Encryption

- End-to-end encryption (E2EE); If data were to be accessed, it would not be readable.
- That encryption remains whether it's between devices, cellular, or accessed via the web. Your data is always secure.



Restriction

- Every network uses its own keys, so a compromise would be isolated to a single location.
- Password best practices and two-factor authentication ensure individual users' passwords are secure and used only by the intended user.



Prevention

- Updates go through a rigorous evaluation period in an isolated environment before being released to devices.
- Evaluations include internal and external audits, keeping Lightcloud Blue security constantly ahead of any would-be intruders.



Protection Against...



Replay Attack - Attackers will try to "record" the activity within the network (e.g. *turn off* command), then "replay" the command by sending recorded messages to control the system. Lightcloud Blue uses a sequence number mechanism, so devices will ignore the duplicated messages (or message with lower sequence number) from the same original source.



Trashcan Attack - Attackers often collect the devices people throw away and extract its credential data. With Lightcloud Blue, when a device is deleted from the network, all credential data is erased. Additionally, each device has a unique "device key". Only with that key can a user/provisioner change the device's settings.



Tracking - Attackers will use trackers to gain access to a user's personal information (IP address, location, etc). Lightcloud Blue uses *obfuscation* technology, which means there is no plain text for source and destination addresses. The attacker cannot identify a node, even if it were using a network "sniffer".

Accessories

Remote

The Lightcloud Blue Remote lets you control your enabled lighting from anywhere onsite. Manage on/off switching, dimming, color temperature tuning*, and set two programmable buttons for custom scenes.



LCBLUEREMOTE/W



Voltage: 3V

Amps: 10mA

Battery Type: CR2032

Battery Life: 2 years

Dimensions:

2 5/8"H x 1 5/16"L x 3/8"W

Weight: 0.21 lbs

**Remote can only adjust CCT on tunable white lamps and fixtures.*

Remote Plate Adapter & Remote Pedestal

PLATE KIT/W/LCB



PEDESTAL/W/LCB



Designed for use with the Remote, the Plate Adapter easily secures your Remote to the wall while the portable Pedestal can be utilized anywhere as a decorative stand with a non-slip bottom.

Nano

The Nano expands Lightcloud Blue's capabilities to include compatibility with Amazon® Alexa or Google® Home and because the Nano connects to Network Time Protocol (NTP) via your Wi-Fi, timekeeping and schedules become more accurate.



NANO/LCB



Voltage: 5V

Amps: 500mA

Connectivity: USB-A
*Must be connected to a
2.4GHz Wi-Fi network*

Dimensions:
1 3/8"H x 1 1/16"L x 1 1/16"W

Weight: 0.07 lbs

Controller

LCBLUECONTROL/W



Voltage: 120 -277V

Load Ratings:

LED/Fluorescent/Incandescent -
120V: 400W; 277V: 400W

IP Rating: IP20



Turn any 0-10V LED fixture into a Lightcloud Blue-enabled luminaire with a Controller. It's easily attached to a 1/2" knockout on a fixture or j-box, or can be factory-installed onto your favorite compatible RAB fixture.

Accessories

Wireless Occupancy Sensor

The Wireless Occupancy Sensor is a battery-operated motion detector and daylight sensor that can be placed anywhere—no wiring required! With a base that can rotate up to 150°, its passive infrared technology is ideal for small movement detection in smaller, open areas.



SENSE/PIR/W/LCB



Mounting Height:	9 ft
Detection Area:	20 ft diameter
Detection Angle:	120° - 150°
Battery Type:	Lithium CR2
Battery Life:	3 years
Operating Temperature:	14°F to 122°F (-10°C to 50°C)

5-Pin Plug-In Controllers

These Controllers add Lightcloud Blue compatibility to HID replacement lamps with integrated 5-pin sensor ports. In addition to the standard Controller, models are also available with a PIR or MVS sensor that includes daylight sensing. When connected to our field-adjustable, Lightcloud Blue-Ready lamps, the Controller allows for CCT tuning.



CONTROL/W/AUX/5SP/LCB

Voltage:	12VDC
Connection Type:	5-pin
IP Rating:	IP20
Operating Temperature:	-4° to 113°F (-20° to 45°C)



CONTROL/W/AUX/5SP/LCBS/MVS

Voltage:	12VDC
Connection Type:	5-pin
Mounting Height:	39 ft
Detection Area:	32 ft. dia.
Daylight Savings:	Yes
IP Rating:	IP20
Operating Temperature:	-4° to 113°F (-20° to 45°C)



CONTROL/W/AUX/5SP/LCBS

Voltage:	12VDC
Connection Type:	5-pin
Mounting Height:	39 ft
Detection Area:	32 ft. dia.
Daylight Savings:	Yes
IP Rating:	IP20
Operating Temperature:	-4° to 113°F (-20° to 45°C)

Dimmers

XDIM/LCB



Hardwired: Yes

Voltage: 120V

Load Switching Capacity:

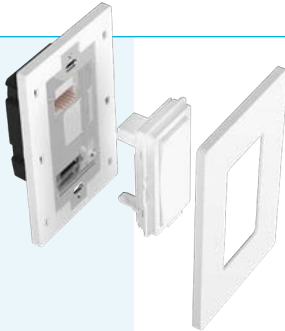
LED/CFL @ 300W; INC/HALELV
@ 500W; MLV @ 400VA

Neutral Wire Required: No

Phase Type: Selectable Forward,
Reverse or Auto Detect

Application Type:

Single-pole, 3-way mechanical
switch, 3-way application
w/normal toggle switch



The XDIM is all about keeping your control options open. Once the base is professionally installed, the paddle is interchangeable, letting you swap out a standard dimmer with a Lightcloud® Blue-enabled dimmer at any time. It can manage a load up to 300W or up to 200 Lightcloud Blue-enabled devices.



XDIM/D10/LCB



Hardwired: Yes

Voltage: 120-277V

Load Switching Capacity:

10A @ 120V or 5A @ 277V

Neutral Wire Required: Yes

Application Type:

Single-pole, 3-way mechanical
switch, 3-way application
w/normal toggle switch

The 0-10V model can easily manage a connected load of up to 10A @ 120V and 5A @ 277V and wirelessly control up to 200 Lightcloud Blue-enabled fixtures.

Accessories

High Bay Low-Voltage Controllers/Sensors

These sensor/controller combinations are designed for use with compatible 0-10V LED fixtures with 12VDC power output in high bay applications. Available with either a PIR or MVS sensor, these accessories are ideal for use in installations of lighting up to 50 feet high.



PIR40/LCB



Voltage: 12VDC

Connection Type: 3-pin pogo

Mounting Height: 39 ft

Detection Angle: 20 ft. dia

Daylight Sensing: Yes

IP Rating: IP65

Operating Temperature:

-4° to 140°F (-20°C to 60°C)



MVS50/LCB



Voltage: 12VDC

Connection Type: 3-pin pogo

Mounting Height: 49 ft

Detection Angle: 20 ft. dia

Daylight Sensing: Yes

IP Rating: IP65

Operating Temperature:

-4° to 140°F (-20°C to 60°C)



RAAS



Mounting: 1/2" knockout

IP Rating: IP65

Compatible Products:

PIR40/LCB and MVS50/LCB

Wired Sensors

LCLCSENSE/SH



Voltage: 12VDC*

Connection Type: RJ09

Mounting Height: 9 ft

Detection Angle: 30 ft. dia

Daylight Sensing: Yes

IP Rating: IP66

Operating Temperature:

-4° to 104°F (-20°C to 40°C)



This passive infrared motion detector can be installed into any ceiling to control individual or groups of fixtures. It functions as both an occupancy and vacancy sensor and also acts as a daylight harvester.

*Requires Lightcloud Blue Controller



LCLCSENSE/M/EG/B



Voltage: 5V

Connection Type: RJ09

Technology: Microwave

Mounting Height: 8-12 feet

Detection Range: 20 ft diameter
@ 9ft mounting height

Daylight Sensing: Yes

Compatible Products:

Select EZPAN families



LCLCSENSE/P/EG/B/2



Voltage: 5V

Connection Type: RJ09

Technology: Passive Infrared

Mounting Height: 8-12 feet

Detection Range: 20 ft diameter
@ 9ft mounting height

Daylight Sensing: Yes

Compatible Products:

EZPAN families

LCLCSENSE/P/EG/A/2



Voltage: 5V

Connection Type: RJ09

Technology: Passive Infrared

Mounting Height: 8-12 feet

Detection Range: 20 ft diameter
@ 9ft mounting height

Daylight Sensing: Yes

Compatible Products:

Select SWISH families



LCLCSENSE/M/EG/A



Voltage: 5V

Connection Type: RJ09

Technology: Microwave

Mounting Height: 8-12 feet

Detection Range: 20 ft diameter
@ 9ft mounting height

Daylight Sensing: Yes

Compatible Products:

Select EZPAN families



Integrated Lightcloud Blue Control

EZPAN®



Size	Color Temp.	Catalog No.	Wattage	Equivalent	Lumens	Efficacy
2X2	● 5000K	EZPAN2X2-17/D10	17W	(2) F17T8	2,181	108
	● 4000K	EZPAN2X2-17N/D10			2,245	126
	● 3500K	EZPAN2X2-17YN/D10			2,294	118
	● 3000K	EZPAN2X2-17Y/D10			2,093	106
	● 5000K	EZPAN2X2-30/D10	30W	(4) F17T8	3,643	114
	● 4000K	EZPAN2X2-30N/D10			3,515	110
	● 3500K	EZPAN2X2-30YN/D10			3,537	109
	● 3000K	EZPAN2X2-30Y/D10			3,496	111
	● 5000K	EZPAN2X2-40/D10	40W	(4) F17T8	4,708	117
	● 4000K	EZPAN2X2-40N/D10			4,542	112
	● 3500K	EZPAN2X2-40YN/D10			4,571	112
	● 3000K	EZPAN2X2-40Y/D10			4,518	114
2X4	● 5000K	EZPAN2X4-30/D10	30W	(2) F32T8	3,722	117
	● 4000K	EZPAN2X4-30N/D10			3,748	116
	● 3500K	EZPAN2X4-30YN/D10			3,559	110
	● 3000K	EZPAN2X4-30Y/D10			3,549	110
	● 5000K	EZPAN2X4-40/D10	40W	(3) F32T8	4,703	116
	● 4000K	EZPAN2X4-40N/D10			4,736	116
	● 3500K	EZPAN2X4-40YN/D10			4,498	109
	● 3000K	EZPAN2X4-40Y/D10			4,485	111
	● 5000K	EZPAN2X4-50/D10	50W	(3) F32T8	5,500	110
	● 4000K	EZPAN2X4-50N/D10			5,539	110
	● 3500K	EZPAN2X4-50YN/D10			5,577	111
	● 3000K	EZPAN2X4-50Y/D10			5,245	105

White ☐



OPTIONS

Adder
Battery Backup

Catalog No. Suffix
/E2

Adder
Lightcloud® Controller
Lightcloud® Blue Controller
Lightcloud® Blue Enabled w/ PIR Sensor
Lightcloud® Blue Enabled w/ MVS Sensor

Catalog No. Suffix
/LC
/LCB
/LCBS
/LCBS/MVS

Size	Color Temp.	Catalog No.	Wattage	Equivalent	Lumens	Efficacy
1X4	● 5000K	EZPAN1X4-17/D10	17W	(2) F17T8	2,294	116
	● 4000K	EZPAN1X4-17N/D10			2,224	111
	● 3500K	EZPAN1X4-17YN/D10			2,264	114
	● 3000K	EZPAN1X4-17Y/D10			2,189	111
	● 5000K	EZPAN1X4-30/D10	30W	(4) F17T8	3,576	115
	● 4000K	EZPAN1X4-30N/D10			3,468	109
	● 3500K	EZPAN1X4-30YN/D10			3,530	112
	● 3000K	EZPAN1X4-30Y/D10			3,413	109
	● 5000K	EZPAN1X4-40/D10	40W	(4) F17T8	4,539	115
	● 4000K	EZPAN1X4-40N/D10			4,402	109
	● 3500K	EZPAN1X4-40YN/D10			4,481	112
	● 3000K	EZPAN1X4-40Y/D10			4,332	109

White ☐



EZPAN® FA Power Adjustable Color Adjustable



2X2	● 5000K ● 4000K ● 3500K	EZPANFA2X2	40/30/25W	(4) F17T8	3,117 - 4,802	up to 128
2X4	● 5000K ● 4000K ● 3500K	EZPANFA2X4	50/40/30W	(4) F32T8	3,600 - 5,630	up to 127
1X4	● 5000K ● 4000K ● 3500K	EZPANFA1X4	40/30/25W	(3) F32T8	2,960 - 4,569	up to 120

White ☐



OPTIONS

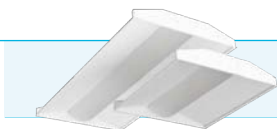
Adder

Lightcloud® Controller	/LC
Lightcloud® Sensor	/LCS
Lightcloud® Blue Controller	/LCB
Lightcloud® Blue Enabled w/ PIR Sensor	/LCBS
Lightcloud® Blue Enabled w/ MVS Sensor	/LCBS/MVS

Catalog No. Suffix

Integrated Lightcloud Blue Control

SWISH®



Size	Color Temp.	Catalog No.	Wattage	Equivalent	Lumens	Efficacy
2X2	● 5000K	SWISH2X2-19/D10	19W	(2) F17T8 (2) F14T5	2,878	158
	● 4000K	SWISH2X2-19N/D10			2,776	152
	● 3500K	SWISH2X2-19YN/D10			2,676	144
	● 3000K	SWISH2X2-19Y/D10			2,533	135
	● 5000K	SWISH2X2-29/D10	29W	(3) F17T8 (3) F14T5	4,037	133
	● 4000K	SWISH2X2-29N/D10			4,039	135
	● 3500K	SWISH2X2-29YN/D10			4,114	137
	● 3000K	SWISH2X2-29Y/D10			3,894	128
2X4	● 5000K	SWISH2X4-39/D10	39W	(2) F32T8 (2) F28T5	5,619	146
	● 4000K	SWISH2X4-39N/D10			5,436	145
	● 3500K	SWISH2X4-39YN/D10			5,334	142
	● 3000K	SWISH2X4-39Y/D10			5,125	135
	● 5000K	SWISH2X4-49/D10	49W	(3) F32T8 (3) F28T5	7,289	140
	● 4000K	SWISH2X4-49N/D10			7,187	142
	● 3500K	SWISH2X4-49YN/D10			7,340	145
	● 3000K	SWISH2X4-49Y/D10			7,052	138

White ☐



OPTIONS

Adder	Catalog No. Suffix	Adder	Catalog No. Suffix
Battery Backup	/E2	Lightcloud® Controller	/LC
Microwave Occupancy Sensor	/MVS	Lightcloud® Controller w/ Battery Backup	/LC/E2
Microwave Occupancy Sensor w/ Battery Backup	/MVS/E2	Lightcloud® Blue Controller	/LCB
		Lightcloud® Blue Enabled w/ PIR Sensor	/LCBS
		Lightcloud® Blue Enabled w/ MVS Sensor	/LCBS/MVS

SWISH® FA

✓ Power Adjustable ✓ Color Adjustable



Size	Selectable Color Temp.	Catalog No.	Selectable Wattage	Equivalent	Lumens	Efficacy
2X2	<ul style="list-style-type: none"> 5000K 4000K 3500K 	EZPANFA2X2	40/30/25W	(4) F17T8	3,117 - 4,802	up to 128
2X4	<ul style="list-style-type: none"> 5000K 4000K 3500K 	EZPANFA2X4	50/40/30W	(4) F32T8	3,600 - 5,630	up to 127
1X4	<ul style="list-style-type: none"> 5000K 4000K 3500K 	EZPANFA1X4	40/30/25W	(3) F32T8	2,960 - 4,569	up to 120

White ☐

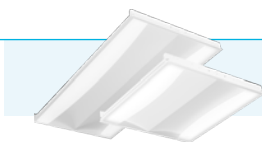


OPTIONS

Adder	Catalog No. Suffix	Adder	Catalog No. Suffix
Battery Backup	/E2	Lightcloud® Controller	/LC
Microwave Occupancy Sensor	/MVS	Lightcloud® Controller w/ Battery Backup	/LC/E2
Microwave Occupancy Sensor w/ Battery Backup	/MVS/E2	Lightcloud® Blue Controller	/LCB
		Lightcloud® Blue Enabled w/ PIR Sensor	/LCBS
		Lightcloud® Blue Enabled w/ MVS Sensor	/LCBS/MVS

Integrated Lightcloud Blue Control

SWISH® FA EDGE  Power Adjustable



Size	Color Temp.	Catalog No.	Selectable Wattage	Equivalent	Lumens	Efficacy
2X2	<ul style="list-style-type: none"> 4000K 3500K 	SWISHFA-EDGE2X2	39/29/19W	(4) F17T8 (4) F14T5	2,466 - 4,240	up to 122
2X4	<ul style="list-style-type: none"> 4000K 3500K 	SWISHFA-EDGE2X4	49/39/29W	(3) F32T8 (3) F28T5	3,938 - 6,016	up to 132

White ☐

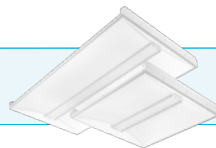


OPTIONS

Adder	Catalog No. Suffix	Adder	Catalog No. Suffix
Battery Backup	/E2	Lightcloud* Controller	/LC
Microwave Occupancy Sensor	/MVS	Lightcloud* Sensor	/LCS
Microwave Occupancy Sensor w/ Battery Backup	/MVS/E2	Lightcloud* Controller w/ Battery Backup	/LC/E2
		Lightcloud* Sensor w/ Battery Backup	/LCS/E2
		Lightcloud* Blue Controller	/LCB
		Lightcloud* Blue Enabled w/ PIR Sensor	/LCBS
		Lightcloud* Blue Enabled w/ PIR Sensor / Battery Backup	/LCBS/E2

SWISH® FA ISLAND

✓ Power Adjustable ✓ Color Adjustable



2X2	<ul style="list-style-type: none"> 4000K 3500K 	SWISHFA-ISLAND2X2	39/29/19W	(4) F17T8 (4) F14T5	2,227-4,408	up to 126
2X4	<ul style="list-style-type: none"> 4000K 3500K 	SWISHFA-ISLAND2X4	49/39/29W	(3) F32T8 (3) F28T5	3,537-5,561	up to 126

White ☐



OPTIONS

Adder	Catalog No. Suffix	Adder	Catalog No. Suffix
Battery Backup	/E2	Lightcloud® Controller	/LC
Microwave Occupancy Sensor	/MVS	Lightcloud® Sensor	/LCS
Microwave Occupancy Sensor w/ Battery Backup	/MVS/E2	Lightcloud® Controller w/ Battery Backup	/LC/E2
		Lightcloud® Sensor w/ Battery Backup	/LCS/E2
		Lightcloud® Blue Controller	/LCB

Integrated Lightcloud Blue Control

T34™ FA

✓ Power Adjustable ✓ Color Adjustable



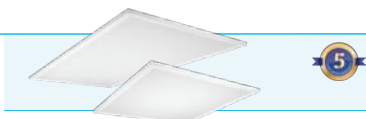
Size	Selectable Color Temp.	Catalog No.	Selectable Wattage	Equivalent	Lumens	Efficacy
2X2	<ul style="list-style-type: none"> 5000K 4000K 3500K 	T34FA-2X2	40/30/20W	(4) F17T8 (4) F14T5	2,279-4,328	up to 134
2X4	<ul style="list-style-type: none"> 5000K 4000K 3500K 	T34FA-2X4	50/40/30W	(3) F32T8 (3) F28T5	3,833-6,027	up to 139
1X4	<ul style="list-style-type: none"> 5000K 4000K 3500K 	T34FA-1X4	40/30/20W	(2) F32T8 (2) F28T5	2,137-4,089	up to 128

White ☐



T34™ FAHE

✓ Power Adjustable ✓ Color Adjustable



2X2	<ul style="list-style-type: none"> 5000K 4000K 3500K 	T34FAHE-2X2	40/30/20W	(4) F17T8 (4) F14T5	2,773-5,545	up to 142
2X4	<ul style="list-style-type: none"> 5000K 4000K 3500K 	T34FAHE-2X4	50/40/30W	(3) F32T8 (3) F28T5	3,828-6,092	up to 148

White ☐

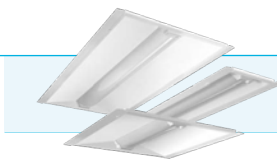


OPTIONS

Adder	Catalog No. Suffix	Adder	Catalog No. Suffix
Lightcloud Control	/LC	Microwave Occupancy Sensor	/MVS
Lightcloud Blue	/LCB	Battery Backup	/E

RTLED

✓ Power Adjustable ✓ Color Adjustable



Size	Selectable Color Temp.	Catalog No.	Selectable Wattage	Equivalent	Lumens	Efficacy
2X2	<ul style="list-style-type: none"> 5000K 4000K 3500K 	RTLED2X2	30/25/18W	(2) F32T8 (4) F17T8 (4) F14T5	2,293 - 3,814	up to 138
2X4	<ul style="list-style-type: none"> 5000K 4000K 3500K 	RTLED2X4	35/30/25W	(3) F32T8 (3) F28T5	3,435 - 4,955	up to 150
1X4	<ul style="list-style-type: none"> 5000K 4000K 3500K 	RTLED1X4	30/25/18W	(2) F32T8 (2) F28T5	2,438 - 4,156	up to 142

White ☐

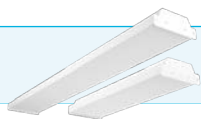


OPTIONS

Adder	Catalog No. Suffix	Adder	Catalog No. Suffix
Battery Backup	/E2	Lightcloud® Controller	/LC
Microwave Occupancy Sensor	/MVS	Lightcloud® Sensor	/LCS
Microwave Occupancy Sensor w/ Battery Backup	/MVS/E2	Lightcloud® Controller w/ Battery Backup	/LC/E2
		Lightcloud® Sensor w/ Battery Backup	/LCS/E2
		Lightcloud® Blue Controller	/LCB
		Lightcloud® Blue Enabled w/ PIR Sensor	/LCBS
		Lightcloud® Blue Enabled w/ MVS Sensor	/LCBS/MVS
		Lightcloud® Blue Enabled w/ PIR Sensor / Battery Backup	/LCBS/E2
		Lightcloud® Blue Enabled w/ MVS Sensor / Battery Backup	/LCBS/MVS/E2

Integrated Lightcloud Blue Control

GUS®



Size	Color Temp.	Catalog No.	Wattage	Equivalent	Lumens	Mt. Height
2'	● 5000K	GUS2-18W/D10	18W	(1) F17T8	2,430	9-12'
	● 4000K	GUS218NW/D10			2,140	
	● 3500K	GUS218YNW/D10			1,991	
	● 3000K	GUS218YW/D10			2,129	
	● 5000K	GUS2-25W/D10	25W	(2) F17T8	3,066	9-12'
	● 4000K	GUS2-25NW/D10			2,757	
	● 3500K	GUS2-25YNW/D10			2,571	
	● 3000K	GUS2-25YW/D10			2,666	
4'	● 5000K	GUS4-36W/D10	36W	(2) F32T8	4,853	10-15'
	● 4000K	GUS4-36NW/D10			4,827	
	● 3500K	GUS4-36YNW/D10			4,681	
	● 3000K	GUS4-36YW/D10			4,547	
	● 5000K	GUS4-50W/D10	50W	(3) F32T8	6,166	10-15'
	● 4000K	GUS4-50NW/D10			6,378	
	● 3500K	GUS4-50YNW/D10			6,131	
	● 3000K	GUS4-50YW/D10			5,801	

White ☐



OPTIONS

Adder

0-10V Dimming w/ Battery Backup*

Catalog No. Suffix

/D10/E2

Adder

0-10V Dimming w/ Lightcloud® Controller

0-10V Dimming w/ Lightcloud® Controller and Battery Backup

Lightcloud® Blue Controller

Catalog No. Suffix

/D10/LC

/D10/LC/E2

/LCB

*GUS4 only

GUS® JR



Size	Color Temp.	Catalog No.	Wattage	Equivalent	Lumens	Mt. Height
2'	● 5000K	GUSJR220-850WU	20W	(2) F17T8	2,532	9-12'
	● 4000K	GUSJR220-840WU			2,620	
	● 3500K	GUSJR220-835WU			2,527	
4'	● 5000K	GUSJR427-850WU	27W	(1) F32T8	3,543	9-12'
	● 4000K	GUSJR427-840WU			3,547	
	● 3500K	GUSJR427-835WU			3,363	
	● 5000K	GUSJR440-850WU	40W	(2) F32T8	4,671	9-12'
	● 4000K	GUSJR440-840WU			4,834	
	● 3500K	GUSJR440-835WU			4,662	

White ☐



OPTIONS

Adder Battery Backup*	Catalog No. Suffix /E2	Adder Lightcloud® Controller	Catalog No. Suffix /LC	Adder Through Wire	Catalog No. Suffix /TW
--------------------------	---------------------------	---------------------------------	---------------------------	-----------------------	---------------------------

*Only available in 4FT (27W or 40W)

GUS17



*Requires RAAS extension arm



Size	Selectable Color Temp.	Catalog No.	Selectable Wattage	Equivalent	Lumens	Efficacy	Mt. Height
2ft	● 5000K ● 4000K ● 3500K	GUS17-2	25/10/15W	(1) F32T8 (3) F17T8	1,798 - 2,974	up to 124	8-12'
4ft	● 5000K ● 4000K ● 3500K	GUS17-4	50/40/30W	(3) F32T8	3,662 - 5,873	up to 128	10-15'

White ☐



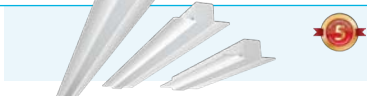
OPTIONS FOR SR AND GUS17

Adder Battery Back Up	Catalog No. Suffix /E	Adder Lightcloud® Blue PIR Sensor	Catalog No. Suffix /LCBS
Microwave Occupancy Sensor	/MVS	Lightcloud® Blue MVS Sensor	/LCBS/MVS
Passive Infrared Occupancy Sensor	/PIR	Lightcloud® Blue PIR Sensor w/ Battery Back Up	/LCBS/E
Microwave Occupancy Sensor w/ Battery Back Up	/MVS/E	Lightcloud® Blue MVS Sensor w/ Battery Back Up	/LCBS/MVS/E
Passive Infrared Occupancy Sensor w/ Battery Back Up	/PIR/E		

Integrated Lightcloud Blue Control

TOMO

✓ Power Adjustable ✓ Color Adjustable



Size	Selectable Color Temp.	Catalog No.	Selectable Wattage	Equivalent	Lumens	Efficacy	Mt. Height
2ft	<ul style="list-style-type: none"> 5000K 4000K 3500K 3000K 	TOMO-2	24/18/12W	up to (1) F32T8, (3) F17T8	1,540-3,332	up to 135	8-12'
4ft	<ul style="list-style-type: none"> 5000K 4000K 3500K 3000K 	TOMO-4	48/36/24W	up to (2) F32T8	2,888-6,603	up to 138	8-15'
8ft	<ul style="list-style-type: none"> 5000K 4000K 3500K 3000K 	TOMO-8	96/72/48W	up to (5) F32T8, (2) F96T8	5,736-12,028	up to 135	10-20'

White ☐



OPTIONS

Adder	Catalog No. Suffix	Adder	Catalog No. Suffix
Battery Back Up ¹	/E	Lightcloud* Control	/LC
Passive Infrared Occupancy Sensor	/PIR	Lightcloud* Control w/ Battery Back Up ¹	/LC/E
Passive Infrared Occupancy Sensor w/ Battery Back Up ¹	/PIR/E	Lightcloud* Blue Controller	/LCB
		Lightcloud* Blue Enabled w/ PIR Sensor	/LCBS

¹Available only for 4' and 8'

SHARK® FA

✓ Power Adjustable ✓ Color Adjustable



Size	Selectable Color Temp.	Catalog No.	Selectable Wattage	Equivalent	Lumens	Efficacy	Mt. Height
2ft	<ul style="list-style-type: none"> 5000K 4000K 3500K 	SHARK2	25/15/10W	(2) F17T8	2,270 - 3,683	up to 148	8 - 15'
4ft	<ul style="list-style-type: none"> 5000K 4000K 3500K 	SHARK4	50/40/30W	(2) F32T8	4,489 - 7,323	up to 155	8 - 20'
8ft	<ul style="list-style-type: none"> 5000K 4000K 3500K 	SHARK8	100/80/60W	up to (6) F32T8 (3) F96T8	8,585 - 14,201	up to 161	10 - 25'

White ☐



1. Marine listed fixtures also available. Marine listed fixtures are not NSF certified.

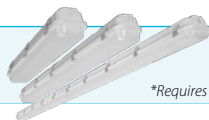
OPTIONS

Adder	Catalog No. Suffix	Adder	Catalog No. Suffix
Battery Backup	/E	Lightcloud® Controller	/LC
Microwave Occupancy Sensor	/MVS	Lightcloud® Sensor	/LCS
Microwave Occupancy Sensor w/ Battery Backup	/MVS/E	Lightcloud® Controller w/ Battery Backup	/LC/E2
		Lightcloud® Sensor w/ Battery Backup	/LCS/E2
		Lightcloud® Blue Controller	/LCB
		Lightcloud® Blue Enabled w/ PIR Sensor	/LCBS
		Lightcloud® Blue Enabled w/ MVS Sensor	/LCBS/MVS
		Lightcloud® Blue Enabled w/ PIR Sensor / Battery Backup	/LCBS/E
		Lightcloud® Blue Enabled w/ MVS Sensor / Battery Backup	/LCBS/MVS/E

Lightcloud Blue Compatible

SEAL® FA

✓ Power Adjustable ✓ Color Adjustable



*Requires RAAS extension arm

Size	Selectable Color Temp.	Catalog No.	Selectable Wattage	Equivalent	Lumens	Efficacy	Mt. Height
2ft	<ul style="list-style-type: none"> 5000K 4000K 3500K 	SEAL2	25/15/10W	(2) F17T8	2,040-3,400	up to 142	8-15'
4ft	<ul style="list-style-type: none"> 5000K 4000K 3500K 	SEAL4	50/40/30W	(2) F32T8	4,080-6,800	up to 142	8-20'
8ft	<ul style="list-style-type: none"> 5000K 4000K 3500K 	SEAL8	100/80/60W	up to (6) F32T8 (3) F96T8	8,220-13,700	up to 143	10-25'

White ☐

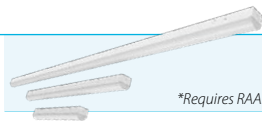


OPTIONS

Adder	Catalog No. Suffix	Adder	Catalog No. Suffix
Battery Backup	/E	Lightcloud® Blue Enabled w/ PIR Sensor	/LCBS
Microwave Occupancy Sensor	/MVS	Lightcloud® Blue Enabled w/ MVS Sensor	/LCBS/MVS
Microwave Occupancy Sensor w/ Battery Backup	/MVS/E	Lightcloud® Blue Enabled w/ PIR Sensor / Battery Backup	/LCBS/E
Passive Infrared Occupancy Sensor	/PIR	Lightcloud® Blue Enabled w/ MVS Sensor / Battery Backup	/LCBS/MVS/E
Passive Infrared Occupancy Sensor w/ Battery Backup	/PIR/E		

SR

✓ Power Adjustable ✓ Color Adjustable



*Requires RAAS extension arm

Size	Selectable Color Temp.	Catalog No.	Selectable Wattage	Equivalent	Lumens	Efficacy	Mt. Height
2ft	<ul style="list-style-type: none"> 5000K 4000K 3500K 	SR2	19/14/10W	(2) F17T8	1,552 - 2,998	up to 161	8 - 12'
4ft	<ul style="list-style-type: none"> 5000K 4000K 3500K 	SR4	40/30/20W	(2) F32T8	3,155 - 6,174	up to 164	8 - 15'
8ft	<ul style="list-style-type: none"> 5000K 4000K 3500K 	SR8	60/50/40W	up to (6) F32T8 (3) F96T8	5,854 - 8,986	up to 159	10 - 20'

White ☐



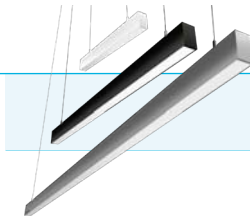
OPTIONS

Adder	Catalog No. Suffix	Adder	Catalog No. Suffix
Battery Backup	/E	Lightcloud* Blue Enabled w/ PIR Sensor	/LCBS
Microwave Occupancy Sensor	/MVS	Lightcloud* Blue Enabled w/ MVS Sensor	/LCBS/MVS
Microwave Occupancy Sensor w/ Battery Backup	/MVS/E	Lightcloud* Blue Enabled w/ PIR Sensor / Battery Backup	/LCBS/E
Passive Infrared Occupancy Sensor	/PIR	Lightcloud* Blue Enabled w/ MVS Sensor / Battery Backup	/LCBS/MVS/E
Passive Infrared Occupancy Sensor w/ Battery Backup	/PIR/E		

Lightcloud Blue Compatible

BOA® FA

✓ Power Adjustable ✓ Color Adjustable



Model	Selectable Color Temp.	Catalog No.	Selectable Wattage	Equivalent*	Lumens*	Mt. Height
2ft	<ul style="list-style-type: none"> 5000K 4000K 3000K 	BOA-2	20/14/12/10/5W	Up to (1) F32T8 (3) F17T8	685 - 2,661	8 - 12'
4ft	<ul style="list-style-type: none"> 5000K 4000K 3000K 	BOA-4	40/28/24/20/10W	Up to (3) F32T8	1,333 - 5,455	10 - 20'
8ft	<ul style="list-style-type: none"> 5000K 4000K 3000K 	BOA-8	80/56/48/40/20W	Up to (6) F32T8 (3) F96T8	2,619 - 10,687	8 - 20'

White
Black
Silver



*Data based on downlight only models. For models with uplight, please visit rablighting.com

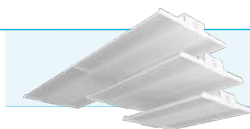
OPTIONS

Adder	Catalog No. Suffix	Adder	Catalog No. Suffix
Battery Backup	/E	Lightcloud® Blue Enabled w/ PIR Sensor	/LCBS
Microwave Occupancy Sensor	/MVS	Lightcloud® Blue Enabled w/ MVS Sensor	/LCBS/MVS
Passive Infrared Occupancy Sensor	/PIR	Lightcloud® Blue Enabled w/ PIR Sensor and Battery Backup ¹	/LCBS/E
Microwave Occupancy Sensor w/ Battery Backup ¹	/MVS/E	Lightcloud® Blue Enabled w/ MVS Sensor and Battery Backup ¹	/LCBS/MVS/E
Passive Infrared Occupancy Sensor w/ Battery Back Up ¹	/PIR/E		

¹ Only available on 4 ft and 8 ft models only

RBAY17™

✓ Power Adjustable ✓ Color Adjustable



Model	Selectable Color Temp.	Catalog No.	Selectable Wattage	Equivalent	Lumens	Mt. Height
SMALL	<ul style="list-style-type: none"> 5000K 4000K 3000K 	RBAY17S	80/100/130W	(6) FSHO 400W MH	12,506 - 19,432	20 - 35'
MEDIUM	<ul style="list-style-type: none"> 5000K 4000K 3000K 	RBAY17M	160/220/260W	750W MH	24,305 - 40,539	25 - 50'
LARGE	<ul style="list-style-type: none"> 5000K 4000K 3000K 	RBAY17L	260/320/400W	1,000W MH	40,105 - 59,933	30 - 60'

White ☐



OPTIONS

Adder

Battery Backup
480V w/ 0-10V Dimming

Catalog No. Suffix

/E
/480

Adder

Lightcloud® Blue Enabled w/ PIR Sensor
Lightcloud® Blue Enabled w/ MVS Sensor

Catalog No. Suffix

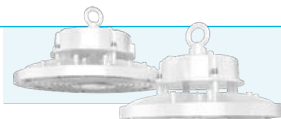
/PIR40/LCB
/MVS50/LCB

1. Available only for 120-277V models

Lightcloud Blue Compatible

H17

✓ Power Adjustable ✓ Color Adjustable



Model	Selectable Color Temp.	Catalog No.	Selectable Wattage	Equivalent	Lumens	Mt. Height
STANDARD	<ul style="list-style-type: none"> 5000K 4000K 3000K 	H17	150/120/100W	400W MH	15,317 - 22,224	20 - 30'
XL	<ul style="list-style-type: none"> 5000K 4000K 3000K 	H17XL	240/200/150W	750W MH	23,336 - 37,253	20 - 50'

White ☐



OPTIONS

Adder

Emergency Backup
 LOSBAY 800 Sensor (base fixture only)
 LOSBAY 800 Sensor (required for reflector)

Catalog No. Suffix

/E2
 /LOS
 /LOS R

Adder

Lightcloud® Controller
 Lightcloud® Sensor (base fixture only)
 Lightcloud® Sensor (required for reflector)
 Lightcloud® Sensor w/ Battery Backup
 Lightcloud® Blue Enabled w/ PIR Sensor
 Lightcloud® Blue Enabled w/ MVS Sensor

Catalog No. Suffix

/LC
 /LCS
 /LCSR
 /LCS/E2
 /PIR40/LCB
 /MVS50/LCB

VAN17

- ✓ Power Adjustable
- ✓ Color Adjustable
- ✓ Selectable Photocell



Size	Selectable Color Temp.	Catalog No.	Selectable Wattage	Equivalent	Lumens	Mt. Height
8'	● 5000K	VAN17-30	30/25/20W	Up to 150W MH	2,859-4,475	8-12'
	● 4000K					
	● 3000K					
	● 5000K	VAN17-50	50/40/30W	Up to 200W MH	4,169-7,075	8-12'
	● 4000K					
	● 3000K					
10'	● 5000K	VAN17-60	60/50/40W	Up to 250W MH	5,550-8,520	8-12'
	● 4000K					
	● 3000K					
	● 5000K	VAN1790	90/80/70W	Up to 400W MH	9,704-13,025	8-20'
	● 4000K					
	● 3000K					

Bronze
White



OPTIONS

Adder	Catalog No. Suffix	Adder	Catalog No. Suffix
Battery Backup	/E	Lightcloud® Blue Enabled w/ PIR Sensor	/PIR40/LCB
Passive Infrared Occupancy Sensor	/PIR20	Lightcloud® Blue Enabled w/ MVS Sensor	/MVS50/LCB
Microwave Occupancy Sensor	/MVS20		
Remote (for standard PIR and MVS sensors only)	/MRS1		

Integrated Lightcloud Blue Control

4" and 6" Natural Spectrum Retrofit



R4R89TW120WB-SS-NS/LCB

Replaces: 65W Halogen

Wattage: 8W

Voltage: 120V

UL Listing: Wet Rated

Dimming: Down to 5%

CCT: 2700 - 6500K

CRI: 95+

Lifespan: 50,000 Hours



LCBR6R119TW120WB-SS-NS

Replaces: 18W CFL/75W INC

Wattage: 11W

Voltage: 120V

UL Listing: Wet Rated

Dimming: Down to 5%

CCT: 2700 - 6500K

CRI: 95+

Lifespan: 50,000 Hours



6" Natural Spectrum Commercial

LCBC6R189TWUNVWS-SS-NS

Replaces: 32W CFL/150W INC

Wattage: 18W

Voltage: 120-277V

UL Listing: Wet Rated

Dimming: Down to 5%

CCT: 2700 - 6500K

CRI: 95+

Lifespan: 50,000 Hours



6" and 8" SmartShift™ Ready Commercial



C623/LCB

Replaces: 32W CFL

Wattage: 23W

Voltage: 120-277V

UL Listing: Wet Rated

Dimming: Down to 5%

CCT: 2700-6500K

CRI: 90

Lifespan: 50,000 Hours



C830/LCB

Replaces: (2) 42W CFL

Wattage: 30W

Voltage: 120-277V

UL Listing: Wet Rated

Dimming: Down to 5%

CCT: 2700-6500K

CRI: 90

Lifespan: 50,000 Hours



Integrated Lightcloud Blue Control

4" and 6" Natural Spectrum Edge-Lit Wafers



WFRL4R99TW120WB-SS-NS/LCB

Replaces: 60W INC

Wattage: 9W

Voltage: 120V

UL Listing: Wet Rated

Dimming: Down to 5%

CCT: 2700 - 6500K

CRI: 95+

Lifespan: 50,000 Hours



WFRL6R139TW120WB-SS-NS/LCB

Replaces: 75W Halogen

Wattage: 13W

Voltage: 120V

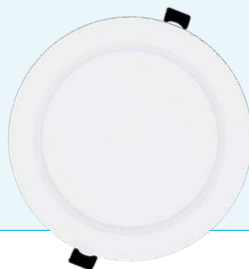
UL Listing: Wet Rated

Dimming: Down to 5%

CCT: 2700 - 6500K

CRI: 95+

Lifespan: 50,000 Hours



RGBW Edge-Lit Wafers



WFR4/RGB WFR4B/RGB

Replaces: 40W Incandescent

Wattage: 8W

Voltage: 120V

UL Listing: Wet Rated

Dimming: Down to 5%

CCT: 2200-6500K and
16+million colors

CRI: 90+

Lifespan: 50,000 Hours



WFR6/RGB WFR6B/RGB

Replaces: 75W Incandescent

Wattage: 13W

Voltage: 120V

UL Listing: Wet Rated

Dimming: Down to 5%

CCT: 2200-6500K and
16+million colors

CRI: 90+

Lifespan: 50,000 Hours



RGBW Retrofit Downlights



R48B/RGB

Replaces: 65W Incandescent

Wattage: 8W

Voltage: 120V

UL Listing: Wet Rated

Dimming: Down to 5%

CCT: 2200-6500K and 16+million colors

CRI: 90+

Lifespan: 50,000 Hours



R611B/RGB

Replaces: 85W Incandescent

Wattage: 11W

Voltage: 120V

UL Listing: Wet Rated

Dimming: Down to 5%

CCT: 2200-6500K and 16+million colors

CRI: 90+

Lifespan: 50,000 Hours



Integrated Lightcloud Blue Control

SmartShift™ Ready Surface Mount

DSK34-4/LCB

Replaces: 50W INC

Wattage: 10W

Voltage: 120V

UL Listing: Wet Rated

Dimming: Down to 5%

CCT: 2700 - 6500K

CRI: 90

Lifespan: 50,000 Hours



DSK34-6/LCB

Replaces: 85W INC

Wattage: 15W

Voltage: 120V

UL Listing: Wet Rated

Dimming: Down to 5%

CCT: 2700 - 6500K

CRI: 90

Lifespan: 50,000 Hours



SUMO12/LCB

Replaces: 120W INC

Wattage: 24W

Voltage: 120-277V

UL Listing: Wet Rated

Dimming: Down to 5%

CCT: 2700 - 6500K

CRI: 90

Lifespan: 50,000 Hours



SUMO19/LCB

Replaces: 150W INC

Wattage: 15W

Voltage: 120-277V

UL Listing: Wet Rated

Dimming: Down to 5%

CCT: 2700 - 6500K

CRI: 90

Lifespan: 50,000 Hours



T8 Linear Tubes



LCBT8-14-48P-8TW-DIR-SS

Type: Ballast Compatible (A)

Replaces: 25/28/32W
Fluorescent

Wattage: 14W

CRI: >80

CCT: 2700-6500K

Voltage: Ballast Dependent

Base: G13

Dimming: Down to 5%

Lifespan: 50,000 Hours



LCBT8-18-48P-8TW-SD-BYP-SS

Type: Ballast Bypass (B)
Single- or Double-Ended

Replaces: 32W Fluorescent

Wattage: 18W

CRI: >80

CCT: 2700-6500K

Voltage: 120-277V

Base: G13

Dimming: Down to 5%

Lifespan: 50,000 Hours



T8-17-48P-8TW-SD-BYP/LCBS/MVS

Type: Ballast Bypass (B)
Single- or Double-Ended

Replaces: 32W Fluorescent

Wattage: 17W

CRI: >80

CCT: 2700-6500K

Voltage: 120-277V

Base: G13

Dimming: Down to 5%

Lifespan: 50,000 Hours



Integrated Lightcloud Blue Control

A19 Natural Spectrum

LCBA19-10-E26-9TW-SS-NS

Replaces: 60W Incandescent

Wattage: 10W

Voltage: 120V

Base: E26 Edison

CCT: 2700 - 6500K

Dimming: Down to 5%

CRI: 95+

Lifespan: 25,000 Hours



A19 RGBW

LCBA19-9-E26-9RGB-SS

Replaces: 60W Incandescent

Wattage: 8W

Voltage: 120V

Base: E26 Edison

CCT: 2200 - 6500K and
16+ million colors

Dimming: Down to 5%

CRI: 90+

Lifespan: 25,000 Hours



BR30 Natural Spectrum

LCBBR30-10-E26-9TW-SS-NS

Replaces: 65W Halogen

Wattage: 10W

Voltage: 120V

Base: E26 Edison

CCT: 2700 - 6500K

Dimming: Down to 5%

CRI: 95+

Lifespan: 25,000 Hours



BR30 RGBW

LCBBR30-7-E26-9RGB-SS

Replaces: 65W Incandescent

Wattage: 7W

Voltage: 120V

Base: E26 Edison

CCT: 2200 - 6500K and
16+ million colors

Dimming: Down to 5%

CRI: 90+

Lifespan: 25,000 Hours



A19s, and
BR30s only



RGB A19 and
RGB BR30 only

Decorative Filament



LCBA19-6-E26-9TW-F-C-SS

Replaces: 60W Incandescent

Wattage: 6W

Voltage: 120V

Base: E26 Edison

CCT: 2200 - 4500K

Dimming: Down to 5%

CRI: 90+

Lifespan: 15,000 Hours



LCBB11-5-E26-9TW-F-C-SS

Replaces: 60W Incandescent

Wattage: 5W

Voltage: 120V

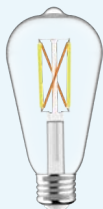
Base: E26 Edison

CCT: 2200 - 4500K

Dimming: Down to 5%

CRI: 90+

Lifespan: 15,000 Hours



LCBST19-6-E26-9TW-F-C-SS

Replaces: 60W Incandescent

Wattage: 6W

Voltage: 120V

Base: E26 Edison

CCT: 2200 - 4500K

Dimming: Down to 5%

CRI: 90+

Lifespan: 15,000 Hours



LCBG25-6-E26-9TW-F-C-SS

Replaces: 60W Incandescent

Wattage: 6W

Voltage: 120V

Base: E26 Edison

CCT: 2200 - 4500K

Dimming: Down to 5%

CRI: 90+

Lifespan: 15,000 Hours



Lightcloud Blue Compatible

Field-Adjustable Post Top

HID-54S-EX39-8TW-BYP/LCBR

Replaces: 150/175/200W MH

Wattage: 35/45/54W

Voltage: 120-277V

Base: EX39 Mogul

CCT: 3000/4000/5000K*

Dimming: Down to 5%

Lifespan: 50,000 Hours



Field-Adjustable High Bay



HID-115S-V-EX39-8TW-BYP/LCBR

Replaces: 200/250/400W MH

Wattage: 60/80/115W

Voltage: 120-277V

Base: EX39 Mogul

CCT: 3000/4000/5000K*

Dimming: Down to 5%

Lifespan: 50,000 Hours



*Requires 5-pin controller to connect to the Lightcloud Blue system and access tunable white features.

Garage Light



HID-65-V-E26-850-BYP-GL/LCBR

Replaces: 200W MH

Wattage: 65W

Voltage: 120-277V

Base: E26 Edison

CCT: 5000K

Dimming: Down to 5%

Lifespan: 25,000 Hours





Interested?

rablighting.com

1 (844) - LIGHTCLOUD

RAB | Lightcloud Blue



©2024 RAB Lighting, Inc.
RAB is continually improving our products. Specifications may change without notice.
The designs of RAB fixtures are protected under U.S. and international intellectual property laws.

